

snom ICU doorkeeper



2-megapixel camera with 120 degree shutter angle and built-in infrared illuminator for night surveillance (out to 10 feet)

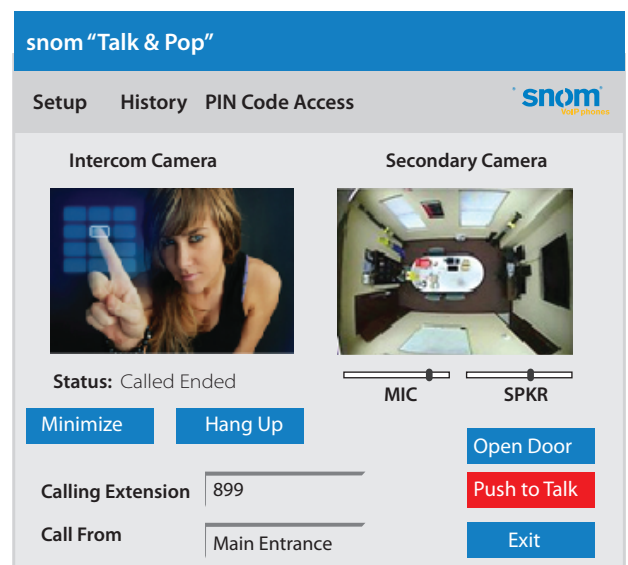
A sophisticated door entry system at an affordable price. The snom ICU doorkeeper is a state-of-the-art intercom system that incorporates voice, video, and controlled access to your building or offices. Whether you are a small office or a large enterprise, the snom ICU doorkeeper allows you to easily stay connected and manage door security.

The unit is SIP-enabled and PoE-powered and easily connects to existing local area networks (LANs) with a single cable connection. The intercom is compatible with most SIP-based IP PBX servers and can be used indoors or outdoors with the proper housing. Its tamper-proof design allows the unit to be mounted securely and safely.

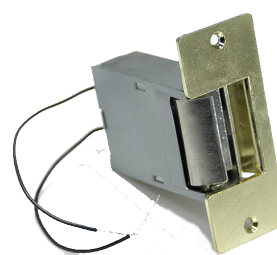
The ICU's built-in IP camera makes controlled and secure access easy and affordable.

- Video door intercom
- Real-time voice and video intercom
- Works with open SIP-based communication systems or with PC
- Vandal-proof* & weather resistant
- Back-lit call button
- Central control of multiple doors
- Works with popular door strikes
- Use with Talk & Pop soft client for real-time communication

If tampering occurs, Tamper Watch software calls the extension, photographs the individual, and issues a warning.



The snom ICU can also be used with Talk & Pop software for real-time video and voice communication via desktop PC.



The ICU doorkeeper can be controlled with popular door strikes.

Technical Data

Power Input/Output

- Speaker Output: 2 Watts peak power
- Minimum power requirements: PoE 802.3af (certain strikes require PoE+)

Temperature

- Operating: -6° to 55°C (14°-131°F)

Dimensions and Weight

- 8" (H) × 6.5" (W) × 2.5" (D)
- 4.2 lbs. or 1.9 kg
- Shipping weight: 5.2 lbs. or 2.4 kg

Additional Data

- Protocol: SIP RFC 3261 Compatible
- Network Rate: Dual speed 10/100 Mb/s

Regulatory Compliance: FCC Class A, UL 60950

snom ICU doorkeeper

- Wall-mount option
- Flush mounting in retrofit applications
- Superb audio quality
 - Supports G.711, GSM, G.722, G.726-32, G.729A
 - High-quality amplifier
 - Adjustable volume controls via web
- Network web management
- Network firmware upgradeable
- Network microphone sensitivity adjustable
- Weather and vandal proof
- Integrated Web server
- Remote control:
 - Software upgrade
 - Configuration
 - Monitoring (inc. line monitoring)
- Internal IP video camera with H.264/MPEG live video streams
- Volume control via web interface
- One relay output for door lock control (rated 1 amp)
- Based on snom 300 design

Faceplate

- Indoor/outdoor with sealed lighted pushbutton
- Weather-proof speaker, mic, and camera
- Anodized aluminum (customized colors)
- Faceplate attached to enclosure with four #6 pin in torx tamper-proof security screws

Customizable plate: variety of colors, branding, LED alarm option



Company branding

snom technology Inc.
18 Commerce Way
Suite 6000
Woburn, MA 01801, USA

tel: +1 978-998-7882
fax: +1 978-998-7883
mail: infoUSA@snom.com